

LEDI SCOUT

TAKE THE LONG WAY HOME



Running low on water offshore isn't just uncomfortable, it's dangerous. The LEDI Scout turns seawater into safety.

Your water maker is your passport to freedom. Skip the port stops.

The difference between turning back and pushing forward?

The LEDI Scout

FREEDOM IN 90 SECONDS

1. PLUG IN THE HOSES
2. TURN ON THE PUMPS
3. CLOSE THE VALVE



The Scout goes anywhere. Install below deck or take it home at the end of the trip. It's the simplest way to start making water on your boat.

KEY FEATURES



Operation

Set up in minutes. Intuitive, straight forward. Connect, switch on, get water.

Output

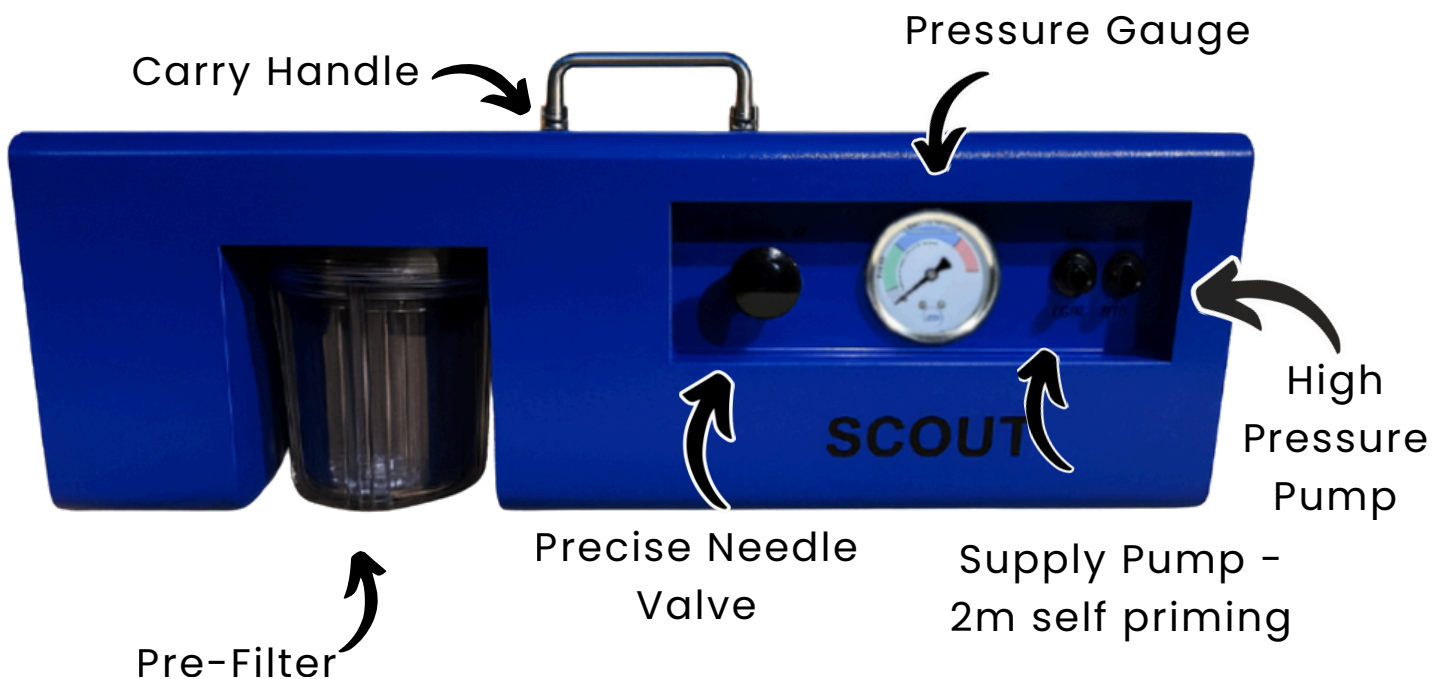
Up to 12 litres of clean water per hour. Depending on salinity.

Portability

Under 18 kg, just 57x24x20 cm. Tough and compact so you can stow easily.

Power

Operates at less than 250W on 12V or 24V. Runs on solar, battery, inverter.

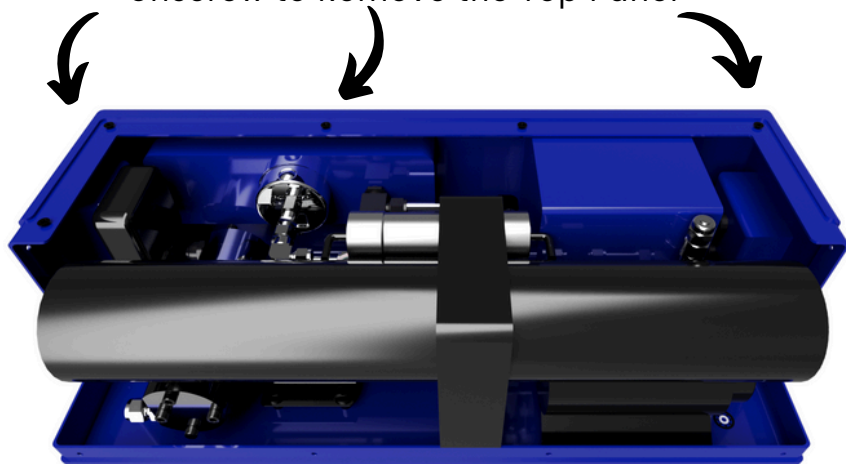


MAINTAINING YOUR SCOUT

Built for the long haul.

- 316SS High Pressure Pump – Built to survive the salt.
- Nitrile Impeller Supply Pump – Easy impeller swap, screwdriver only.
- 316SS Ultra High Pressure Fittings & Valves – Quality throughout.
- Accessible Filters & Membranes – Replaceable at sea.
- Simple Mechanical Design – No unreliable electronics.

Unscrew to Remove the Top Panel



Easy membrane, pump and fittings access



Unscrew the Pre-Filter Cartridge

MEMBRANE REPLACEMENT

Equipped with a SW 2514 membrane to remove salt.

Freshwater flush daily (just a few minutes) to increase longevity.

Replace in <15mins

- 1) Remove the top panel
- 2) Disconnect connecting line
- 3) Remove the end cap
- 4) Slide the membrane out
- 5) New membrane in!

PRE-FILTER REPLACEMENT

Keep internal pumps pristine. Fitted with a 2.5x5" pre-filter. Easily access without taking the Scout apart.

Occasional washing will keep your filter in top condition.

Replace in <2mins

- 1) Unscrew the housing
- 2) Remove the old filter
- 3) Replace with new filter!

STORING THE SCOUT

Flushing your Scout regularly keeps the membranes clean and performing at their best. If you plan to leave your Scout unused for 2–4 weeks, it's quick and easy to pickle the system:

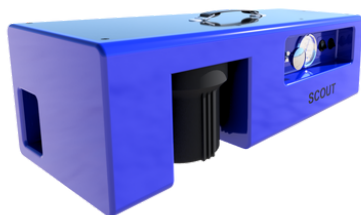
1. Mix the included pickling solution with product water
2. Run it through the system
3. Stow it—done.



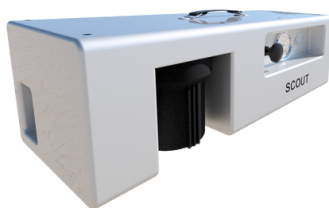
CUSTOMISING YOUR SCOUT

Each Scout is hand made in the Gold Coast by Engineers.
This means we can customise certain features to suit you!

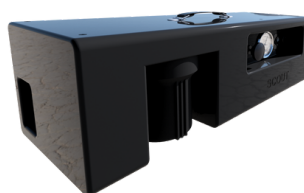
Choose your colour



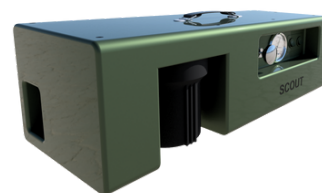
\$0



+\$450



+\$450



+\$450

Choose your power source

12V
18A

24V
10A

Choose your accessories

**Anderson
Adapter**

\$0

**UV
Sterilisation**

\$0

**240v
Adapter**

+\$200

**Boat Install
Kit**

Extra hose, valves ,
20mic Prefilter

Coming Soon

Already included with your Scout

**3 x 3m
Hoses**

**1 x RO
Membrane**

**2 x Pre-Filter
Cartridges**

**Maintenance
Kit & Cleaning
Solution**

Special Request? Contact Us.

LEDI PTY LTD | info@ledi.com.au | LEDI.com.au | Gold Coast, QLD, Australia

LEDI - SCOUT

Product Details

Components	Supply Pump	Flexible Impeller Pump 1 m Self priming 3m Head Replacement Impeller supplied
	High Pressure Pump	USA Made 24/12V Pump. Ceramic Plunger Full 316SS Body Brushless Motor Oil free Fully serviceable
	Reverse Osmosis Membrane	2514 Sea Water Membrane (0.6m3/day) LG Chem TFC Custom Wound by WSD
	Pressure Relief System	316LSS Pressure Relief valve Tuned to 1000 PSI. Easily accessible for maintenance
	High Pressure Fittings	316LSS Compression Fittings rated to 6000 PSI
	Pre-filter	2.5 x 5" "Big Blue" style clear filter housing 1 x 5um Pleated Filter, & 1 x 5um PP Filter included
	Frame	Powder coated aluminium case
	Inlet and Brine Fittings	½ John Guest Style Push fit with PU flexible hoses. Push fit adapters can be provided to plumb into boat system.
	Product water Fitting	¼ in John Guest Style Push fit with semi rigid hose.
	Power Supply	Fused - 12v 21A or 24V 11A (Anderson plug) 240v Adapter available *note 24V system has slightly higher power consumption
Physical properties	Size	57 x 24 x 20 cm
	Weight	<18kg
Performance	Sea Water	Test 1: 30,000 PPM - 2 hr run time - 900 PSI - 12 LPH Avg Test 2: 35,000 PPM - 2 hr run time - 900 PSI - 9.5 LPH Avg Test 3: 40,000 PPM - 2 hr run time - 900 PSI - 8.5 LPH Avg

SCOUT

Forget the Schedule.

**Contact us to get
yours now**



Visit our website

ledi.com.au

or reach out at

info@ledi.com.au



LEDI PTY LTD | info@ledi.com.au | LEDI.com.au | Gold Coast, QLD, Australia